



Surveillance Forum

LIVE

08 January 2020
9:30 AM-10:30 PM
NNC7 FB Page



***Dissemination Forum
On the Interim Guidelines on OPT,
Nutrition Screening and GMP during COVID-19
and Nutrition Service Continuity Online Survey***

Prayer



ND II Shaira Camille T. Labastida



Surveillance Forum

LIVE

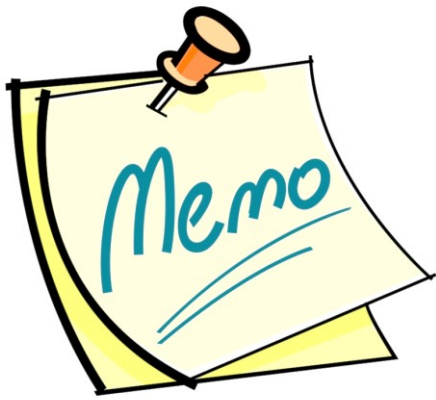
08 January 2020
9:30 AM-10:30 PM
NNC7 FB Page



***Dissemination Forum
On the Interim Guidelines on OPT,
Nutrition Screening and GMP during COVID-19
and Nutrition Service Continuity Online Survey***

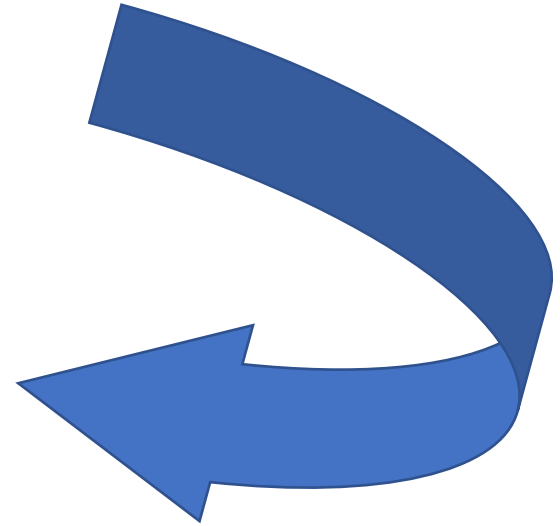


Interim Guidelines in the conduct of OPT Plus, Nutrition Screening, GMP activities in the context of COVID-19 Pandemic and other related disasters



**DOH-Department Circular 2020-0167
“Continuous Provision of Essential Health
Services during the COVID-19 Epidemic.”**

**DOH-Department Memorandum
2020-0237 "Interim Guidelines
for the Delivery of Nutrition
Services in the Context of
COVID-19 Pandemic under
Growth and Development
Monitoring and Promotion.”**



DOH-Department Memorandum 2020-0237

- ▷ Suggest the use of MUAC tapes instead of the weight and length/height measuring tools to adapt to a reduced physical contact approach of health care provider to infant or child.



In the absence of
insufficient MUAC
tapes...

Global Nutrition Cluster key considerations:



1. Thoroughly disinfect the weight and height/length measuring tools, MUAC tapes and other frequently touched surfaces and objects using diluted household bleach solutions or alcohol solutions (70%) every after use and between measurements.
2. Between measurements refer to DOH-Department Memorandum 2020-015 for the guidelines on cleaning and disinfection in various settings as an IPC measure against COVID-19.

Global Nutrition Cluster key considerations:

3. Ensure physical safe distance between the mothers/caregivers and their children with the members of the OPT Team until their measurements can be taken.

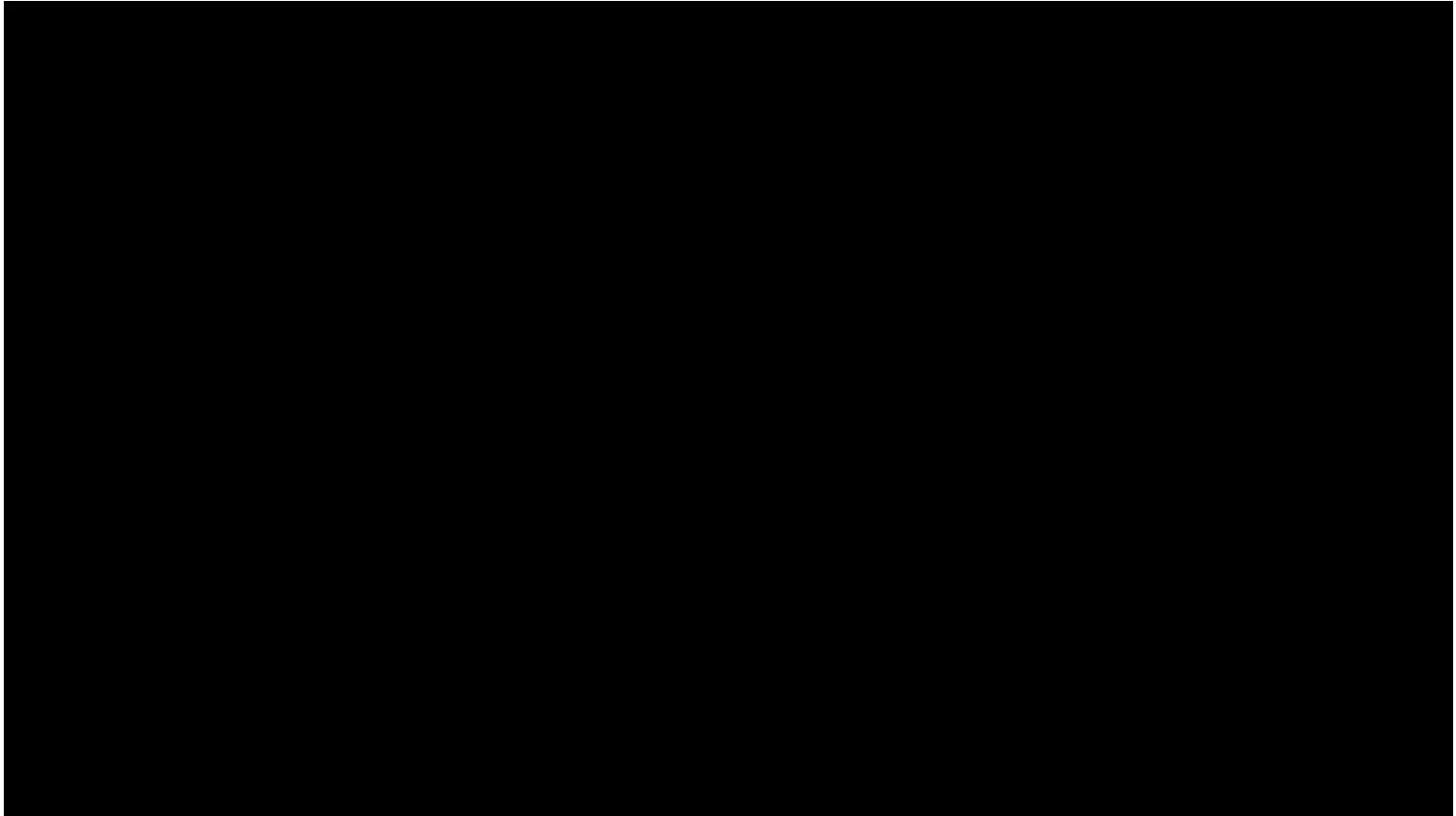


4. Ensure members of OPT Team wear face mask, face shield and gloves when taking measurements. Mothers/caregivers should also wear face masks and face shields.

Global Nutrition Cluster key considerations:

5. Re-consider positioning of measurer when reading the measurements, e.g. read from behind the individual for MUAC measurement to potentially reduce risk of droplet exposure.
6. Members of OPT Team can also consider using this opportunity to teach mothers/caregivers to assess nutritional status of their children using MUAC

Here's how we use the MUAC





Surveillance Forum

LIVE

08 January 2020
9:30 AM-10:30 PM
NNC7 FB Page



***Dissemination Forum
On the Interim Guidelines on OPT,
Nutrition Screening and GMP during COVID-19
and Nutrition Service Continuity Online Survey***



**Measurement schedule,
recording and reporting of OPT
Plus, nutrition screening, and
growth monitoring**

Conducting the OPT Plus



- ❑ Conduct of OPT Plus using traditional weight and height measuring tools should be continued as basis to provide interventions to prevent deterioration of nutritional status. This should be completed within the first quarter of the year (January to March).

Electronic Operation Timbang Plus Tools (eOPT)

📅 Last Updated: 07 December 2020

Recent Update:

1. The multiplier for estimating the population of children 0 to 59 months has been revised using area- specific multipliers/factors pursuant to DOH-Memo # 2018 – 0381
2. Click the link below based on your respective area

[LUZON](#)

[VISAYAS](#)

[MINDANAO](#)

3. Please click the link below for the community level acute malnutrition tool to be used during emergencies

[e-OPT Tool for Acute Malnutrition - Community Level](#) <- **Currently Unavailable**

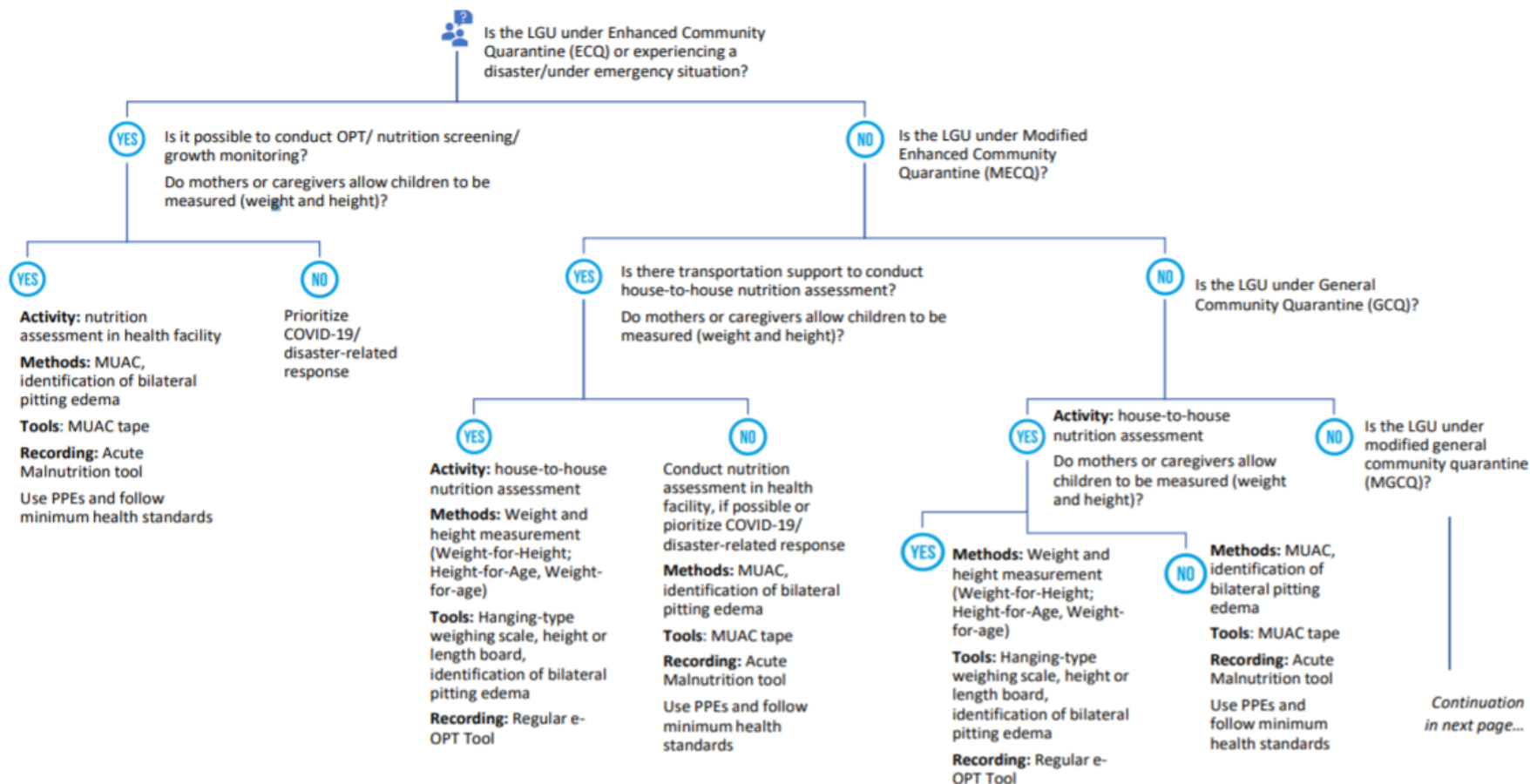
Use the electronic OPT tool downloadable from the NNC Website <https://www.nnc.gov.ph/?view=article&id=3461> to facilitate recording and reporting.

eOPT Tool for Acute Malnutrition

- ❑ If situation does not allow the use of traditional tools, use MUAC to assess nutritional status of children and recorded results in the e-OPT tool for Acute Malnutrition, downloadable from the NNC website: <https://www.nnc.gov.ph/optacute>.
- ❑ The e-OPT Tool for Acute Malnutrition is similar to the structure and method of encoding, consolidation, and auto-generation of reports as the original e-OPT tool.

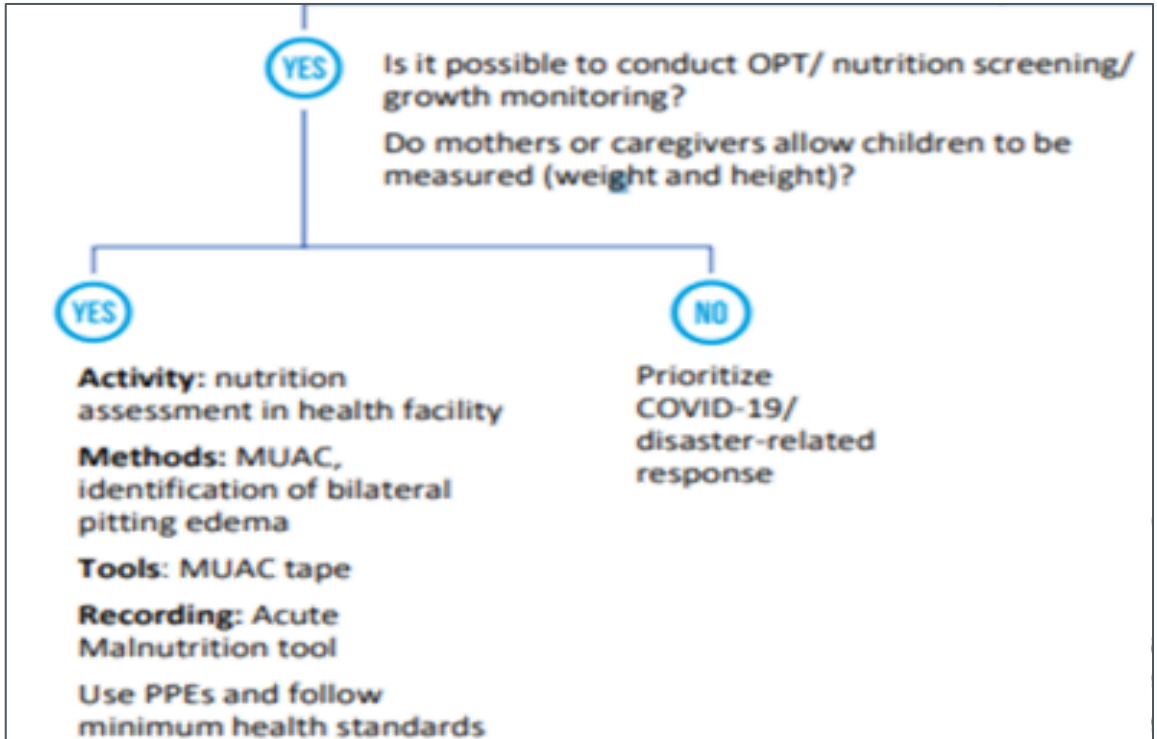


ANNEX 1 – Decision Tree for Local Government Units on the conduct of Operation Timbang, Nutrition Screening, Growth Monitoring and Promotion Activities in the Context of Pandemic and Other Related Disasters

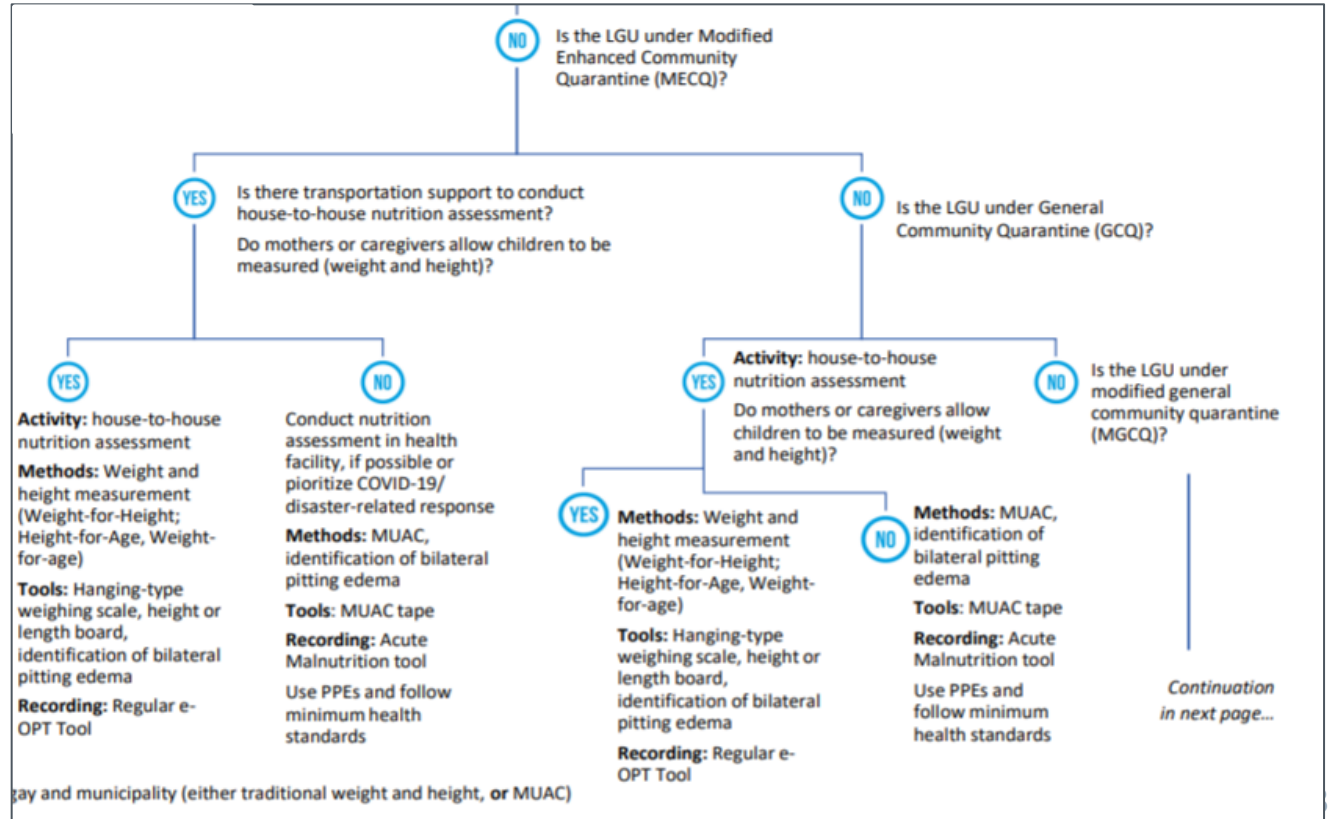


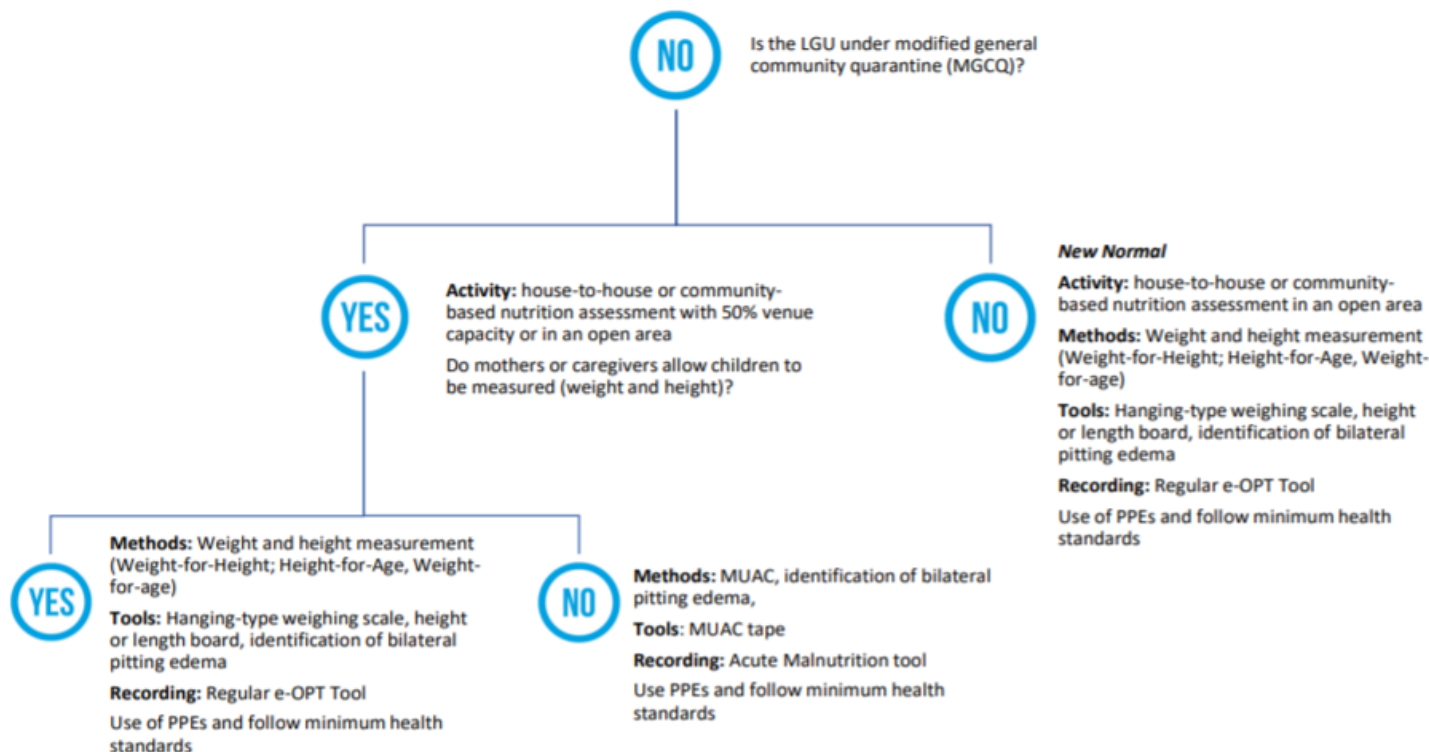
*Use only one assessment method for the whole barangay and municipality (either traditional weight and height, or MUAC)

Decision Tree

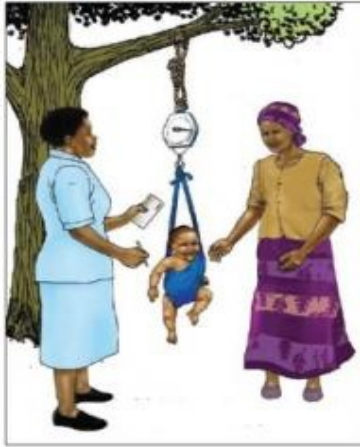


Decision Tree





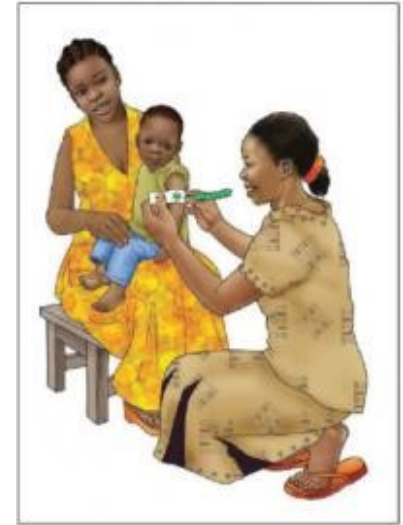
Continued Growth Monitoring



- ❑ Growth monitoring and promotion activities should also be continued and reported:
 - monthly for children under 2 years old and those identified as malnourished based on OPT;
 - quarterly for children 2 to under 5 years old, regardless of nutritional status.
- ❑ MUAC of children aged 6 to 23 months with normal nutritional status and no **bilateral pitting edema** should be measured monthly, and quarterly for 24 to 59 months old.

Continued Growth Monitoring of the Acutely Malnourished

- ❑ While undergoing appropriate management, MUAC of children identified with severe acute malnutrition (SAM) or severely wasted shall be measured every 2 weeks, and moderate acute malnutrition (MAM) or moderately wasted without bilateral pitting edema every month until MUAC is **greater than 12.5cm for two consecutive measurements.**
- ❑ **Monthly reports** should be generated at the city/municipal level through the health officer and the nutrition action officer and reported to the local nutrition committee.



Continued Growth Monitoring of the Acutely Malnourished

- ❑ Immediately refer children identified as acutely malnourished to the nearest barangay health center/rural health unit for further assessment, and appropriate and timely management.
- ❑ Moderately acutely malnourished children should be referred to targeted supplementary feeding programs in child development centers, health/nutrition centers, in schools, or where available.



Promotion Activities



- ❑ Relay the measurements of the child and provide feedback and counselling to mothers and caregivers of the children measured. Reinforce good behaviors and respectfully correct any misconceptions or wrong practices.
- ❑ Relay the measurements of the child and provide feedback and counselling to mothers and caregivers of the children measured. Reinforce good behaviors and respectfully correct any misconceptions or wrong practices.

Scenarios at the Local Government Units and Nutrition Screening, Growth Monitoring and Promotion Activities

Scenario (based on DOH-DM No. 2020-0237)	Nutrition Screening, Growth Monitoring and Promotion Activities				
	Normal Nutritional Status			SAM children	MAM children
	0 to <6 months old	6 to 23 months old	24 to 59 months old		
Scenario 1-2 during Recognition Phase Stage 1 Zero Cases or importation	Weight-for-length	Weight-for-height or MUAC Bilateral pitting edema	Weight-for-height or MUAC Bilateral pitting edema	<ul style="list-style-type: none"> Weight-for-length for less than 6 months old Weight-for-length/height or MUAC for 6 to 59 months old 	<ul style="list-style-type: none"> Weight-for-length for less than 6 months old Weight-for-length/height or MUAC for 6 to 59 months old
	Monthly monitoring		Quarterly monitoring	Monitoring every 2 weeks	Monthly monitoring
	Follow-up through virtual platforms, home visits, and primary health care facilities				

Scenario (based on DOH-DM No. 2020-0237)	Nutrition Screening, Growth Monitoring and Promotion Activities				
	Normal Nutritional Status			SAM children	MAM children
	0 to <6 months old	6 to 23 months old	24 to 59 months old		
Scenario 3 Initiation Phase Stage 2 Localized Transmission Health and nutrition staff are engaged in COVID-19 response	Weight-for-length	MUAC Bilateral pitting edema	MUAC Bilateral pitting edema	<ul style="list-style-type: none"> • Weight-for-length for less than 6 months old • MUAC for 6 to 59 months old • Bilateral pitting edema 	<ul style="list-style-type: none"> • Weight-for-length for less than 6 months old • MUAC for 6 to 59 months old
	Monthly monitoring		Quarterly monitoring	Monitoring every 2 weeks	Monthly monitoring
	Follow-up through virtual platforms, home visits, and primary health care facilities				

Scenario (based on DOH-DM No. 2020-0237)	Nutrition Screening, Growth Monitoring and Promotion Activities				
	Normal Nutritional Status			SAM children	MAM children
	0 to <6 months old	6 to 23 months old	24 to 59 months old		
Scenario 4 During Acceleration Phase Stage 3 Community Transmission All health and nutrition staff and other health office personnel are engaged in COVID-19 response	Weight-for-length	MUAC Bilateral pitting edema	MUAC Bilateral pitting edema	<ul style="list-style-type: none"> • Weight-for-length for less than 6 months old • MUAC for 6 to 59 months old • Bilateral pitting edema 	<ul style="list-style-type: none"> • Weight-for-length for less than 6 months old • MUAC for 6 to 59 months old
	Monthly monitoring		Quarterly monitoring	Monitoring every 2 weeks	Monthly monitoring
	<ul style="list-style-type: none"> • Visits to non-emergency concerns to primary health care facilities are suspended. • Follow-up through virtual platforms and home visits 				

Download the Interim Guidelines here



<https://qrgo.page.link/3SgJw>



Thank you!

National Nutrition Council Region VII

DOH-CV CDH Cmpd., Osmeña Blvd., Cebu City

Telefax Nos: (032) 254-3263 / 418-7182

Website: www.nnc.gov.ph/regional-offices/region-vii

Email: region.7@nnc.gov.ph or nutritioncouncil_7@yahoo.com

<https://www.facebook.com/NNCRVII>

http://twitter.com/NNC_7



Surveillance Forum

LIVE

08 January 2020
9:30 AM-10:30 PM
NNC7 FB Page



***Dissemination Forum
On the Interim Guidelines on OPT,
Nutrition Screening and GMP during COVID-19
and Nutrition Service Continuity Online Survey***